

SHELVING SYSTEMS CONFIGURATOR MANUAL

Obsah

- Introduction.....** 1
- Fitting out the walls with shelves** 2
- Editing shelving units.....** 8
- Entering additional shelving units.....** 10
- 3D view** 12
- Drawing a number of rooms.....** 13
- Estimate preview** 14
- Estimate data** 18
- Customer database** 19
- Estimate database.....** 20
- Preferences** 21
- Prices and Codes** 22
- Export configuration to CSV** 24
- Import to B2B cart** 25

Introduction

The Shelving Optimization program allows you to optimise your IM92ms shelving installations, exploiting space to the full whilst producing pleasing aesthetic results. Through this program, you can fit out any room, no matter what its floor plan, with shelves in a wide range of configurations, receive an estimate for the overall shelving cost, which will also give you a breakdown of all accessories required for your chosen shelving, and view the 2D-3D image of your room already shelved.

Here are some of the software's basic features:

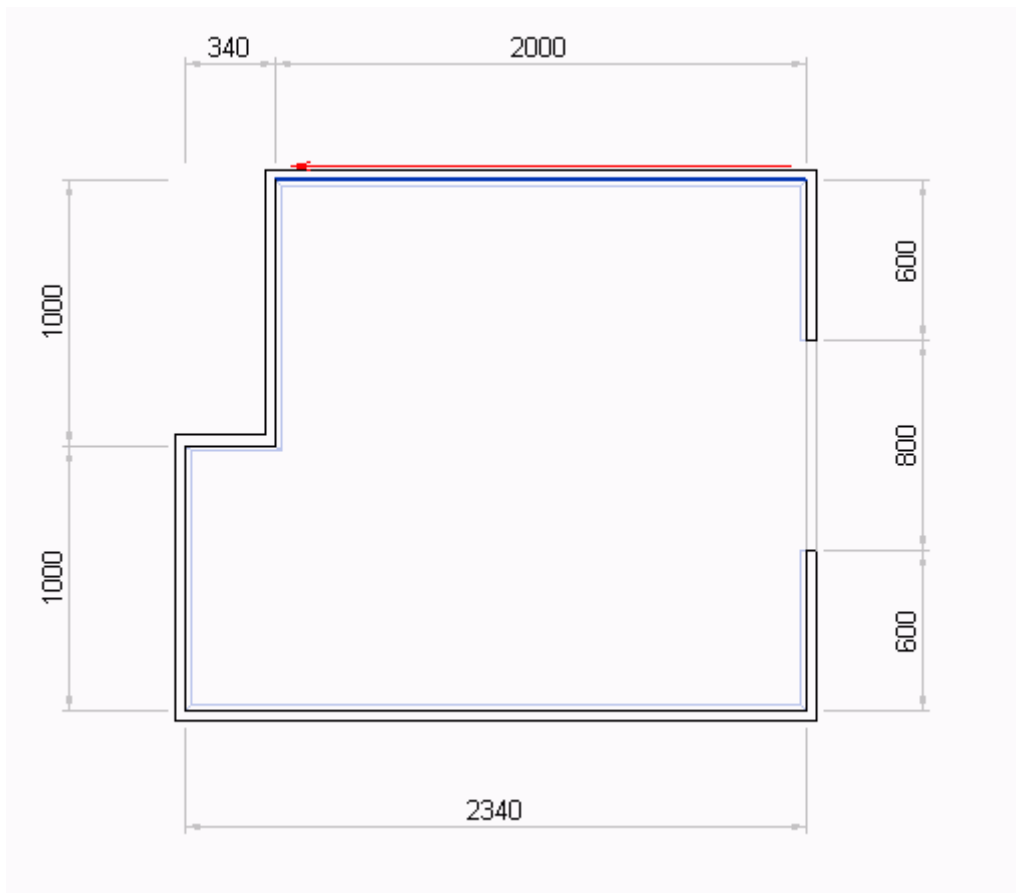
- You can draw rooms with any floor plan (the only restriction is that walls must be at right angles to each other).
- You can draw a number of rooms at the same time. This means you can cost even complex projects, or compare different shelved versions of the same room.
- "Automatic" insertion of shelving units. The program will choose the size and optimal number of shelving units on the wall for you, though you can always change them as you please.
- You can introduce constraints on the configuration of shelving units on a wall, in the event special unit sizes are required, or there are physical and load capacity restrictions.
- You have the option of adding freestanding shelving units.

- The fitted-out room can be viewed straight away in 3D.
- The image can be exported in DXF format (2D or 3D).
- Print preview available for estimate and images.
- Management of customer database.
- Management of estimate database.

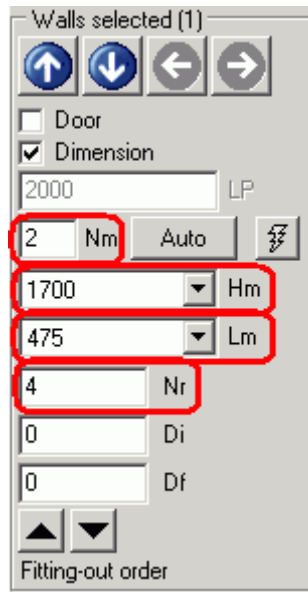
This tutorial is not meant as an exhaustive help tool, and is instead a step-by-step guide to help you get an estimate quickly.

Fitting out the walls with shelves

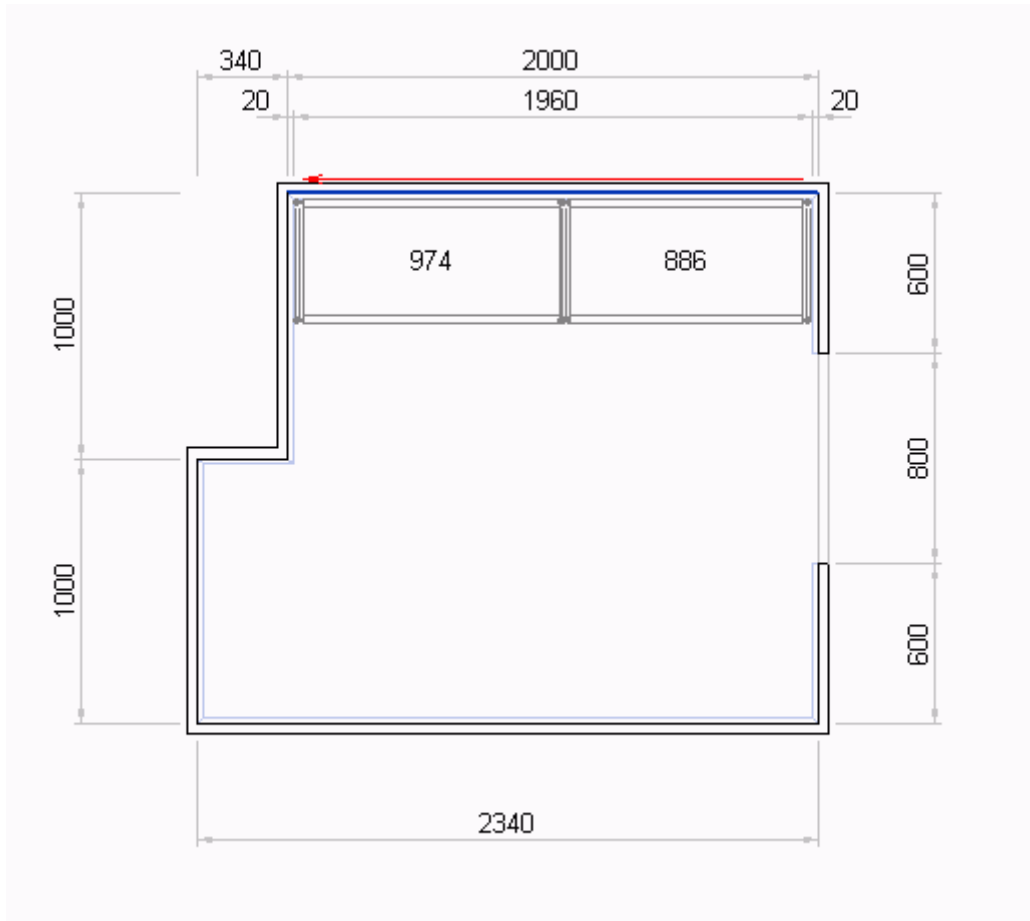
Once you've selected one or more walls, you can enter the number of shelving units they are to be fitted out with.



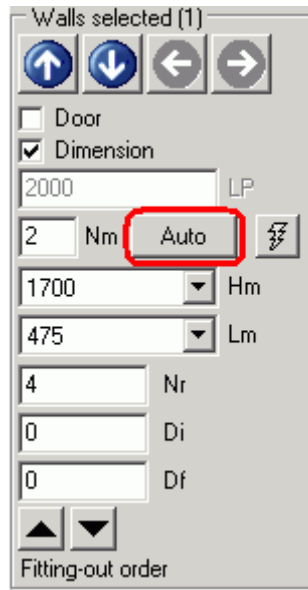
You can also enter the height, width and number of shelves the units entered are to have.



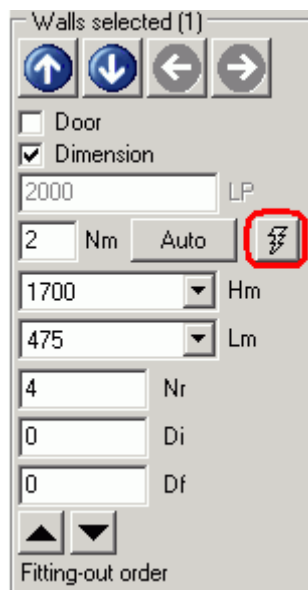
Once you've edited each value, you must press the "enter" key.

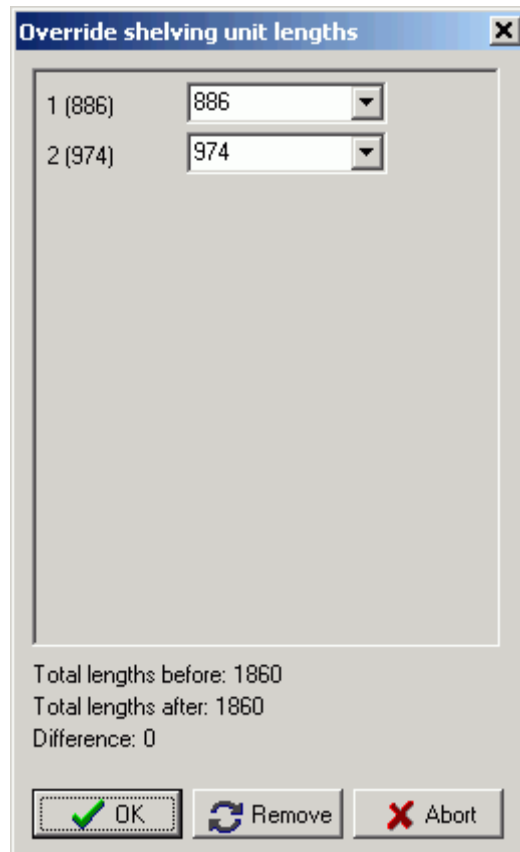


The auto key fits out the walls selected, entering the number of shelving units automatically.

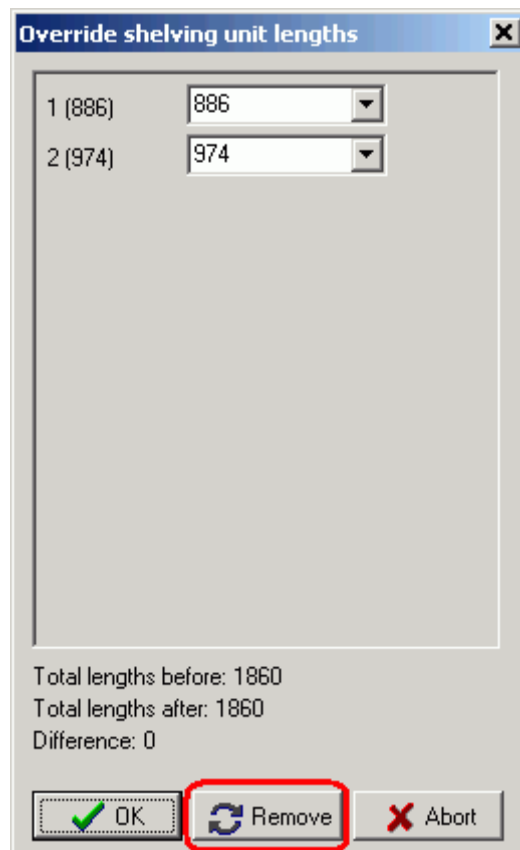


The "override shelving units" key can instead be used to force your own configuration of shelving units on the selected wall.





If you decide to remove the override, simply press the "Remove" button.



You can set a minimum distance that the shelving units must keep at the ends of the wall by editing the Di (initial distance) and Df (final distance) values.

Walls selected (1)

↑ ↓ ← →

Door

Dimension

2000 LP

2 Nm Auto

1700 Hm

475 Lm

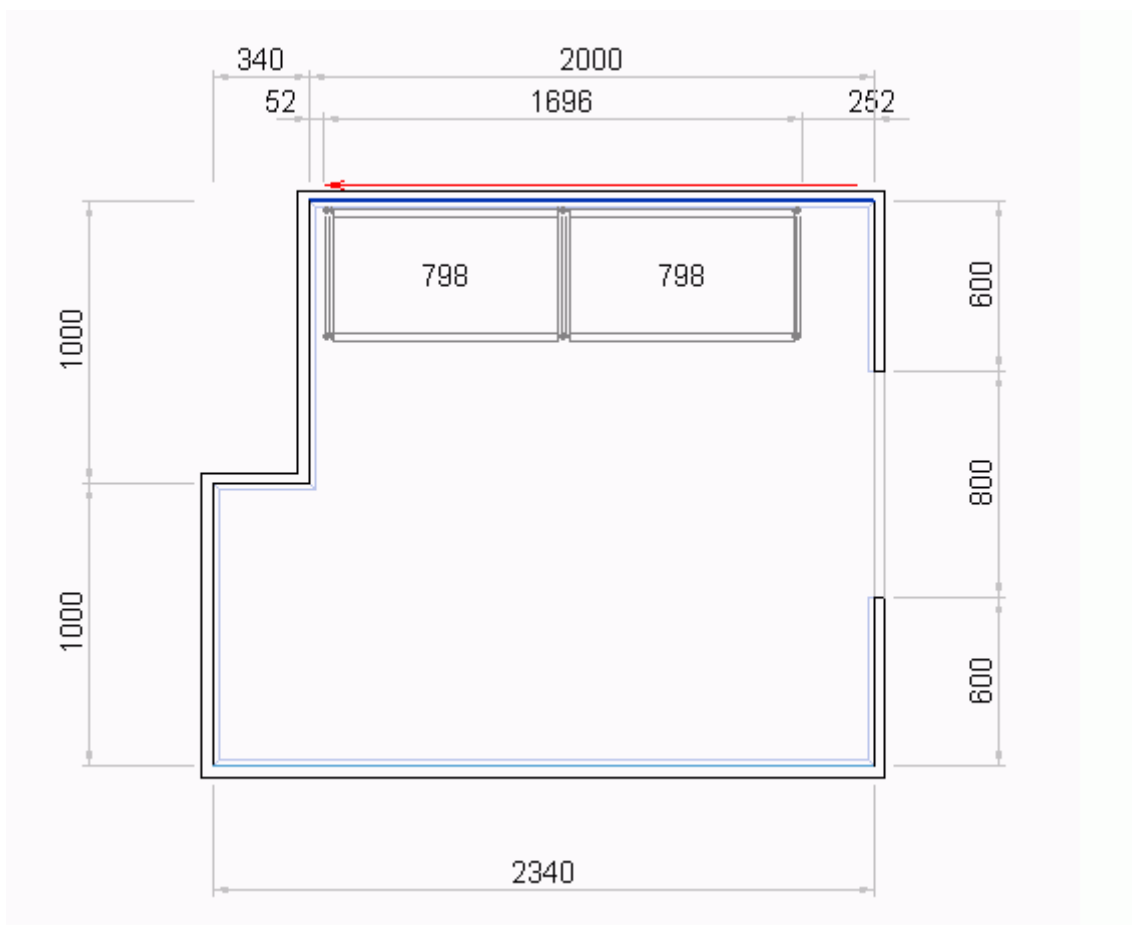
4 Nr

200 Di

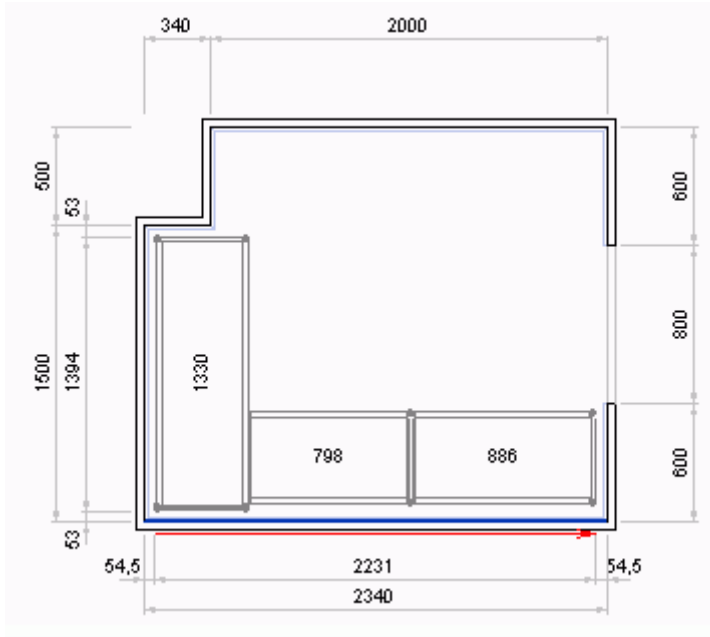
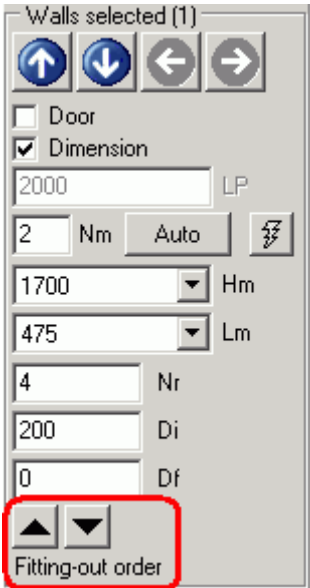
0 Df

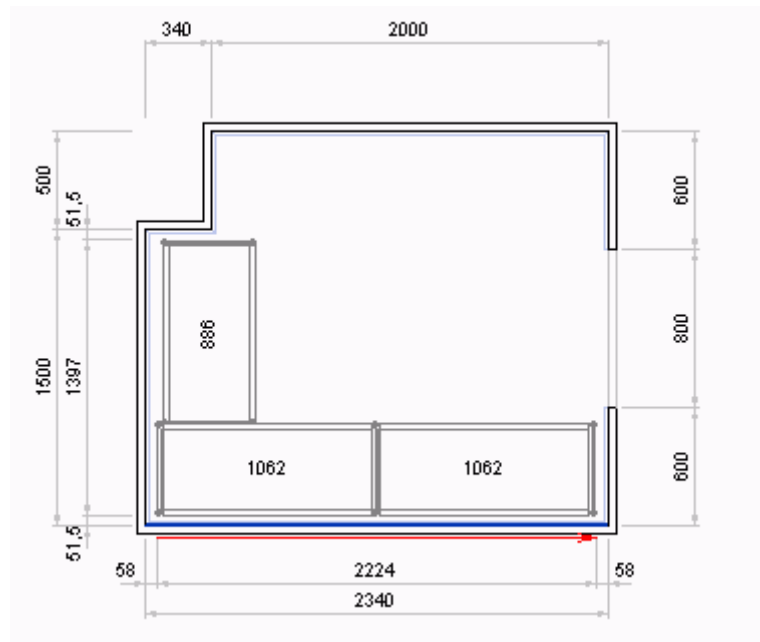
▲ ▼

Fitting-out order



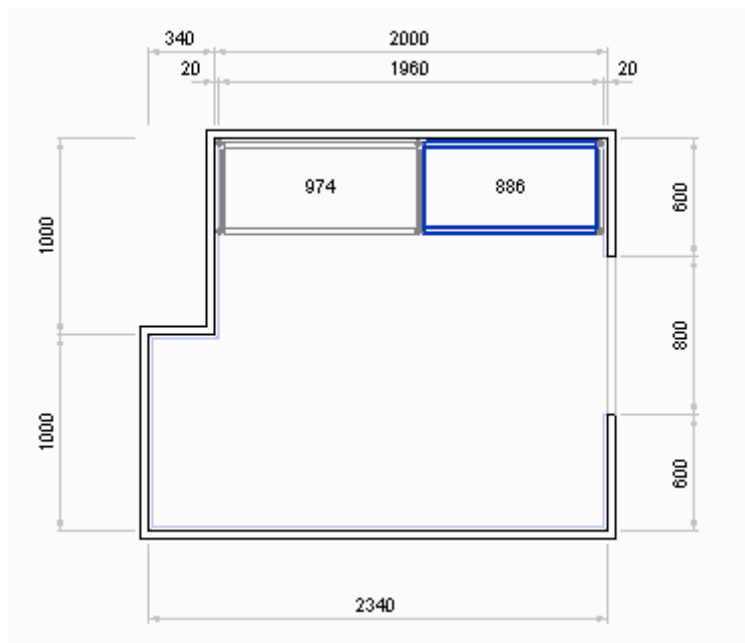
Using the "Fitting-out order" buttons, you can instead alter the way in which the shelves of two adjacent walls are connected. When you decrease the fitting-out order of a wall, you cause its shelving units to be secured to those of the neighbouring walls. If you increase the fitting-out order, the shelving units of the neighbouring walls will instead be secured to those of the wall selected.

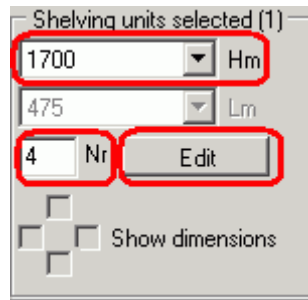




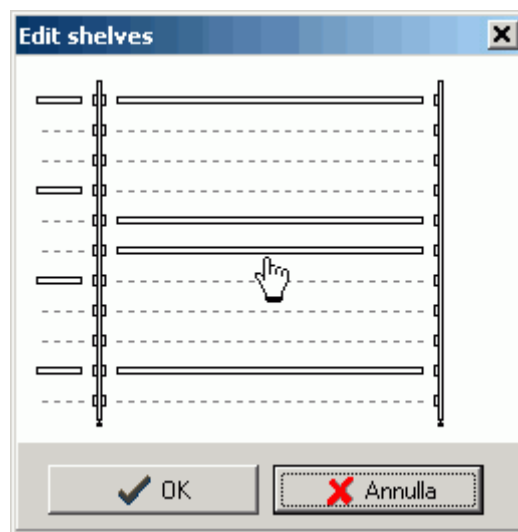
Editing shelving units

The characteristics of the shelving units entered are inherited from the values entered for the relevant wall. However, you can select and edit one or more units individually.

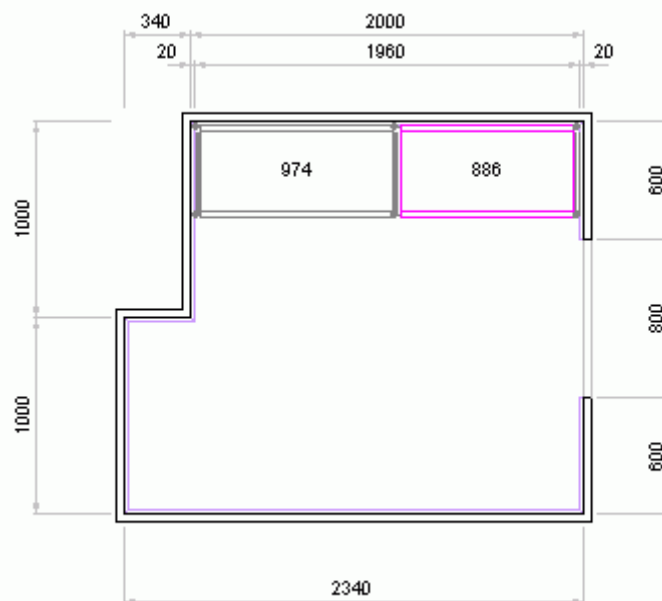




You can edit the height and the number of shelves set for the units selected. Moreover, you can edit the configuration of the shelves by manually typing in the height they will be positioned at.



Edited shelving units will be highlighted in a different colour.



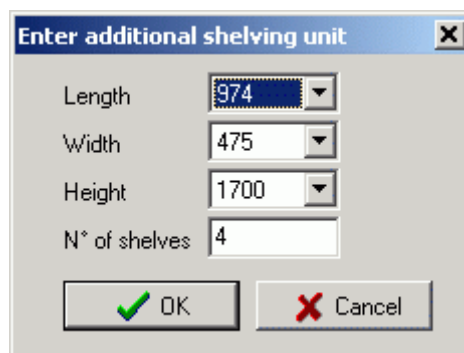
Changes made to shelving units are part of the final customized touches to be added to a shelving installation.
Such changes will be lost if the shelving setup is recalculated.

Entering additional shelving units

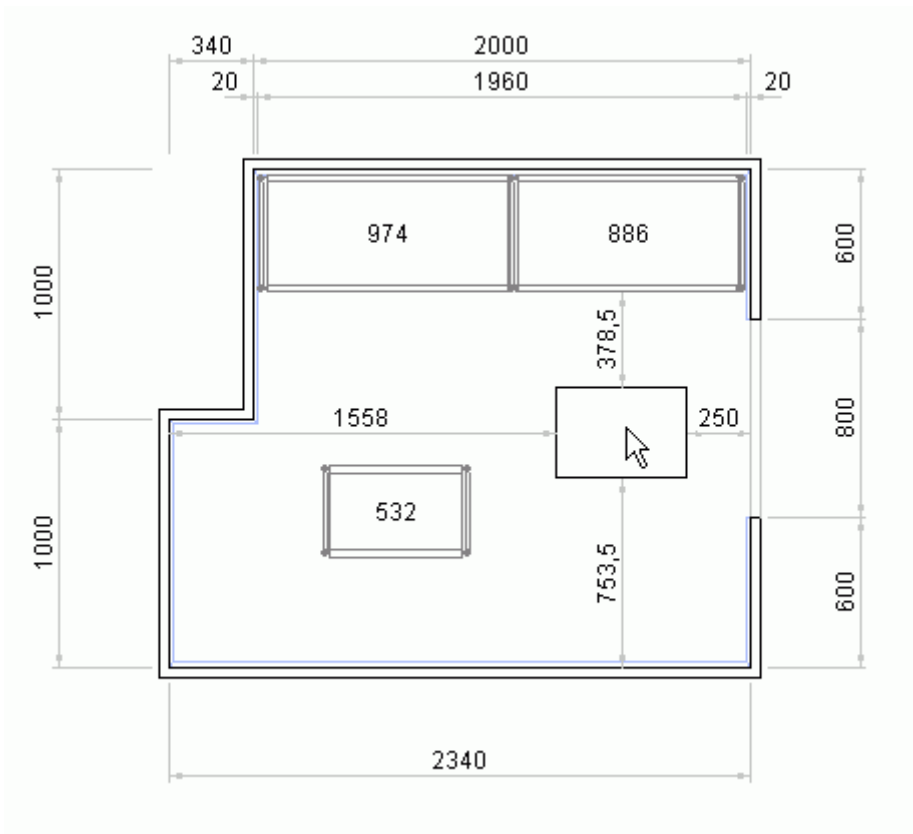
In some cases, you may need to enter shelving units in the middle of the room, or not attached to a wall at least. This operation can be performed with the "Enter additional shelving units" key.



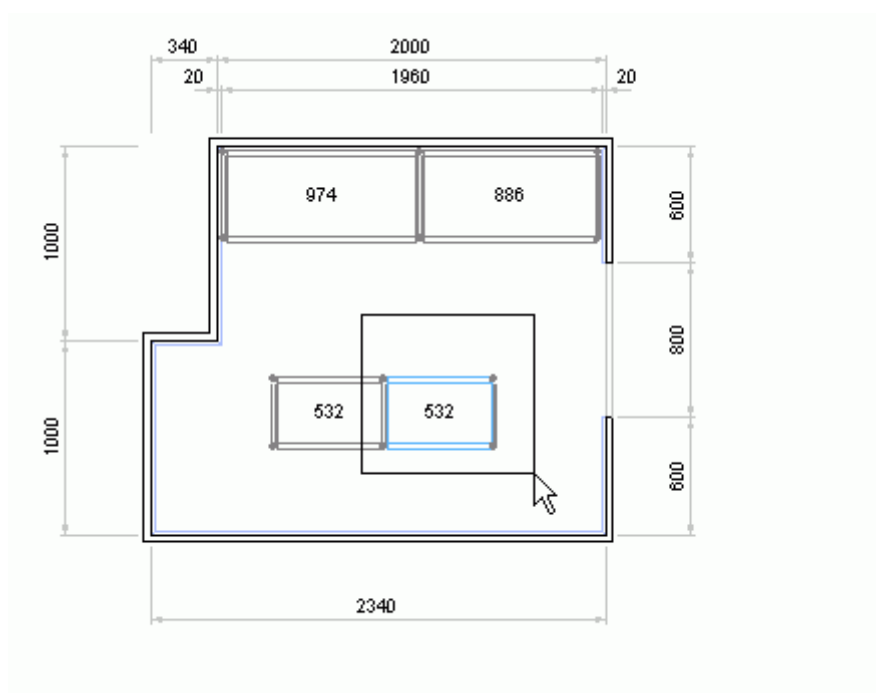
In the following window, you can select the dimensions and number of shelves the additional units are to have.

A dialog box titled "Enter additional shelving unit" with a close button (X) in the top right corner. It contains four input fields: "Length" with a value of 974, "Width" with a value of 475, "Height" with a value of 1700, and "N° of shelves" with a value of 4. At the bottom, there are two buttons: "OK" with a green checkmark icon and "Cancel" with a red X icon.

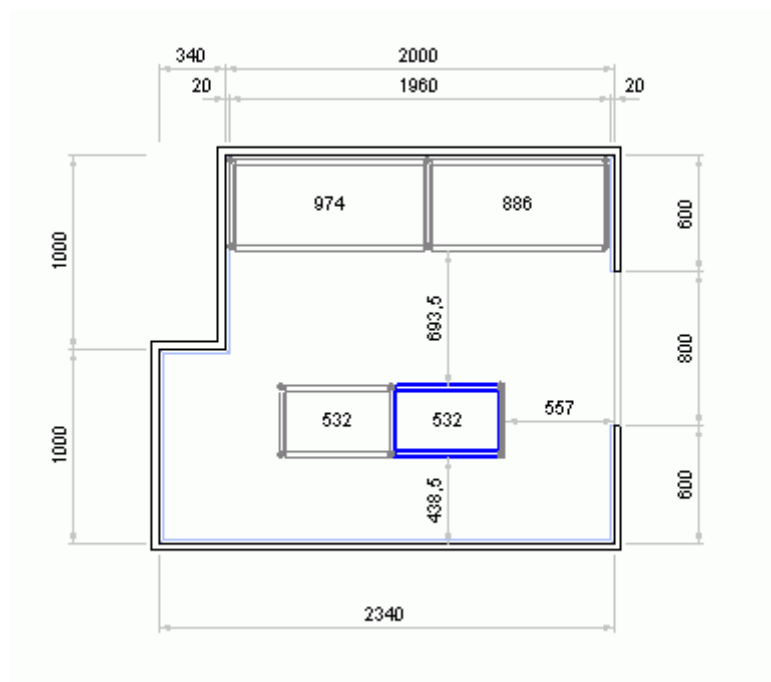
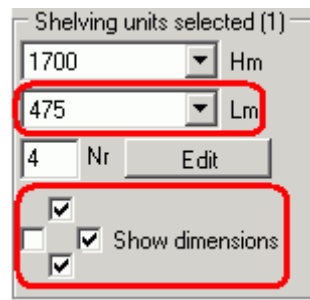
The additional units are positioned using the mouse or, for greater accuracy, using the arrow keys.
The right mouse button enables rotation of the units while they are being added.
When the mouse is moved, the shelving unit being added tends to attach to the units already installed in the room.
If you prefer, you can disable this feature by holding down the "CTRL" key.



Once entered, the additional shelving units can be selected and edited (see previous step).



When dealing with additional shelving units, you can also set the width of the shelving unit and decide what dimensions you want displayed.



NB: you can reposition additional shelving units by selecting them and moving them with the arrow keys.

Every time you press the key, the shelving units are moved by 1 mm.

If you also hold down the "CTRL" key, the shelving units are moved by 10 mm every time you press the arrow keys.

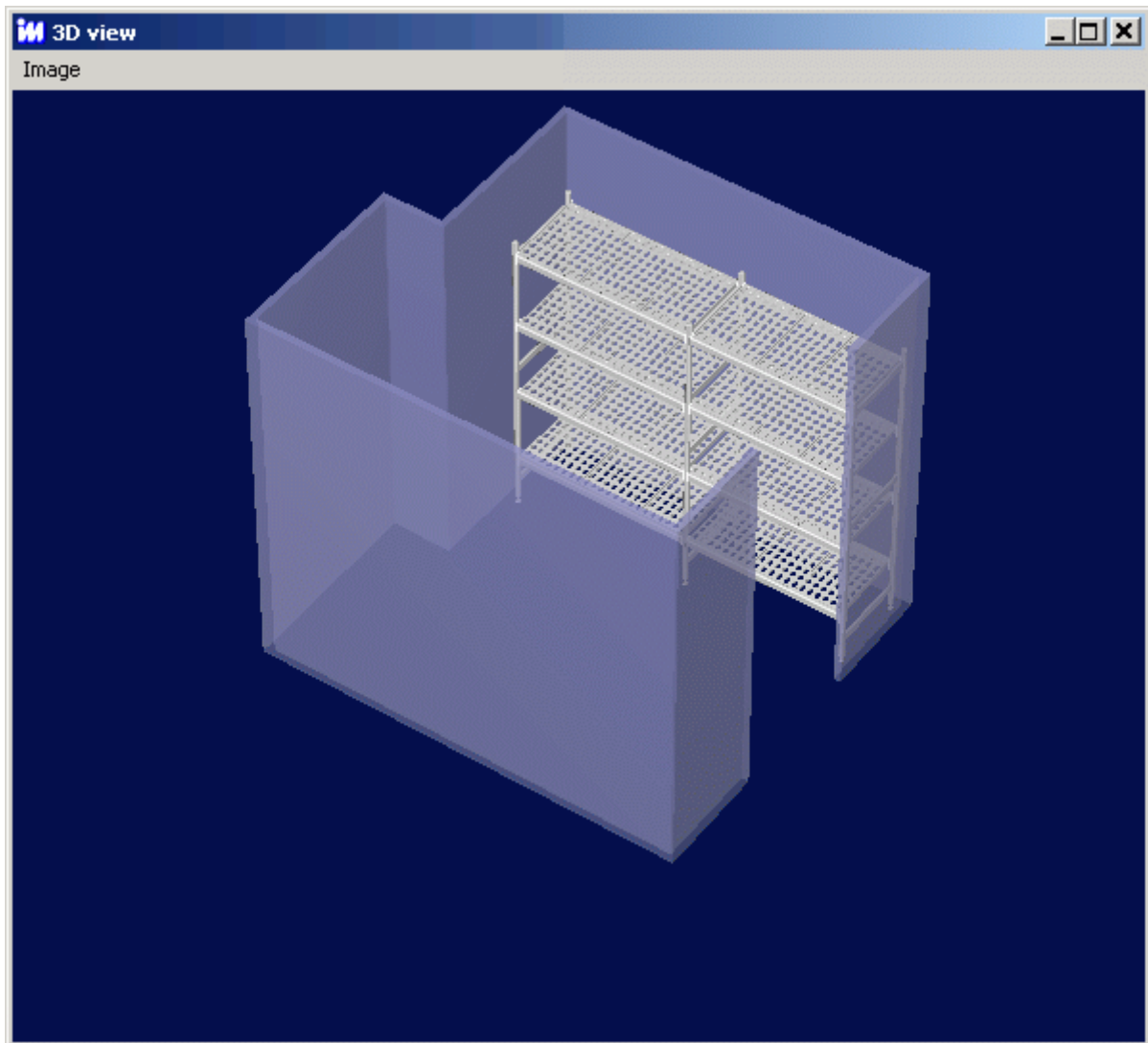
You can delete additional shelving units by selecting them and pressing the "Delete" key.

3D view

The 3-dimensional view helps give you an immediate idea of what the fitted-out room will look like.



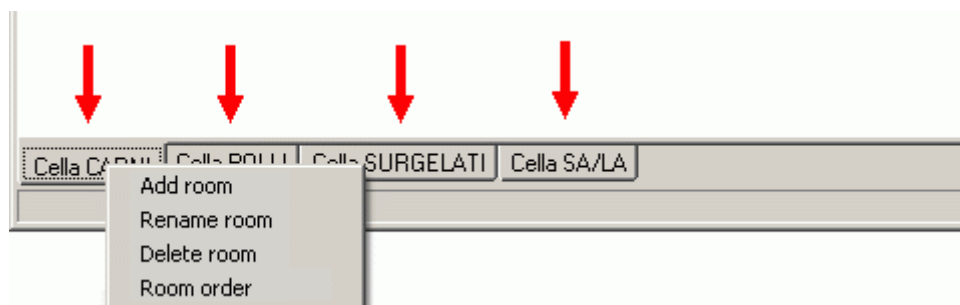
You can rotate the image (right mouse button) and zoom in and out (left mouse button). You can also save it to file or print it.



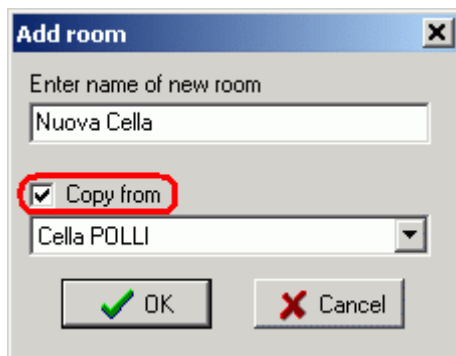
Some of the 3D view options can be set in the "Preferences" window.

Drawing a number of rooms

Some projects might entail drawing more than one room. To add a new worksheet to the estimate, simply right-click the label in the bottom left-hand corner. A popup menu appears via which you can choose to add, rename or delete rooms from the estimate. It can also be used to change the room order once the rooms have been created.

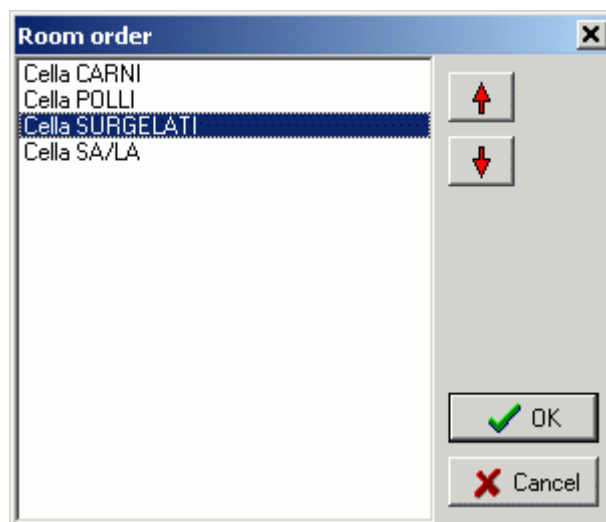


You can switch from one room to another by clicking the relevant label in the bottom left-hand corner.



When adding a new room to the project, you can decide whether you want it to be empty or to contain the data of a previously entered room. This option proves useful when looking into different variations on a single room layout.

The "room order" option allows you to rearrange the sequence of the rooms.



To put rooms in a different order, simply select their name from the list and move them using the arrows.


Estimate preview

Once the drawing phase is over, you can call up a print preview of the estimate.



In addition to printing the estimate, you can also opt to email the current estimate directly.

Print preview - Page 1/9



ITALMODULAR S.p.A.
 Via Du Campid, 26
 44018 - 44018 - 44018
 Tel. +39 0575 91200
 Fax +39 0575 91201
 E-mail: info@italmodular.it
 P.IVA 01500000449
 P. IVA 01500000449
 P. IVA 01500000449

SEMPRE S.p.A.

Mariano Luciano CO
 Italia

Total € 14.885,60

Discount (10%) -1.488,56

Net € 13.397,04

ESTIMATE

Code	Descrizione	Quantità	Prezzo	Totale
02.000.01	2 tubolare 2 mod 1 rca 2 lca	2	10,00	20,00
02.000.02	2 tubolare 2 mod 1 rca 2 lca	2	10,00	20,00
Subtotal 40,00				
Discount (10%) -4,00				
Net 36,00				
02.000.03	4 tubolare 1 rca 2 lca	4	10,00	40,00
02.000.04	4 tubolare 1 rca 2 lca	4	10,00	40,00
02.000.05	4 tubolare 1 rca 2 lca	4	10,00	40,00
02.000.06	4 tubolare 1 rca 2 lca	4	10,00	40,00
02.000.07	4 tubolare 1 rca 2 lca	4	10,00	40,00
02.000.08	4 tubolare 1 rca 2 lca	4	10,00	40,00
02.000.09	4 tubolare 1 rca 2 lca	4	10,00	40,00
02.000.10	4 tubolare 1 rca 2 lca	4	10,00	40,00
02.000.11	4 tubolare 1 rca 2 lca	4	10,00	40,00
02.000.12	4 tubolare 1 rca 2 lca	4	10,00	40,00
02.000.13	4 tubolare 1 rca 2 lca	4	10,00	40,00
02.000.14	4 tubolare 1 rca 2 lca	4	10,00	40,00
02.000.15	4 tubolare 1 rca 2 lca	4	10,00	40,00
02.000.16	4 tubolare 1 rca 2 lca	4	10,00	40,00
02.000.17	4 tubolare 1 rca 2 lca	4	10,00	40,00
02.000.18	4 tubolare 1 rca 2 lca	4	10,00	40,00
02.000.19	4 tubolare 1 rca 2 lca	4	10,00	40,00
02.000.20	4 tubolare 1 rca 2 lca	4	10,00	40,00
02.000.21	4 tubolare 1 rca 2 lca	4	10,00	40,00
02.000.22	4 tubolare 1 rca 2 lca	4	10,00	40,00
02.000.23	4 tubolare 1 rca 2 lca	4	10,00	40,00
02.000.24	4 tubolare 1 rca 2 lca	4	10,00	40,00
02.000.25	4 tubolare 1 rca 2 lca	4	10,00	40,00
02.000.26	4 tubolare 1 rca 2 lca	4	10,00	40,00
02.000.27	4 tubolare 1 rca 2 lca	4	10,00	40,00
02.000.28	4 tubolare 1 rca 2 lca	4	10,00	40,00
02.000.29	4 tubolare 1 rca 2 lca	4	10,00	40,00
02.000.30	4 tubolare 1 rca 2 lca	4	10,00	40,00
02.000.31	4 tubolare 1 rca 2 lca	4	10,00	40,00
02.000.32	4 tubolare 1 rca 2 lca	4	10,00	40,00
02.000.33	4 tubolare 1 rca 2 lca	4	10,00	40,00
02.000.34	4 tubolare 1 rca 2 lca	4	10,00	40,00
02.000.35	4 tubolare 1 rca 2 lca	4	10,00	40,00
02.000.36	4 tubolare 1 rca 2 lca	4	10,00	40,00
02.000.37	4 tubolare 1 rca 2 lca	4	10,00	40,00
02.000.38	4 tubolare 1 rca 2 lca	4	10,00	40,00
02.000.39	4 tubolare 1 rca 2 lca	4	10,00	40,00
02.000.40	4 tubolare 1 rca 2 lca	4	10,00	40,00
02.000.41	4 tubolare 1 rca 2 lca	4	10,00	40,00
02.000.42	4 tubolare 1 rca 2 lca	4	10,00	40,00
02.000.43	4 tubolare 1 rca 2 lca	4	10,00	40,00
02.000.44	4 tubolare 1 rca 2 lca	4	10,00	40,00
02.000.45	4 tubolare 1 rca 2 lca	4	10,00	40,00
02.000.46	4 tubolare 1 rca 2 lca	4	10,00	40,00
02.000.47	4 tubolare 1 rca 2 lca	4	10,00	40,00
02.000.48	4 tubolare 1 rca 2 lca	4	10,00	40,00
02.000.49	4 tubolare 1 rca 2 lca	4	10,00	40,00
02.000.50	4 tubolare 1 rca 2 lca	4	10,00	40,00
02.000.51	4 tubolare 1 rca 2 lca	4	10,00	40,00
02.000.52	4 tubolare 1 rca 2 lca	4	10,00	40,00
02.000.53	4 tubolare 1 rca 2 lca	4	10,00	40,00
02.000.54	4 tubolare 1 rca 2 lca	4	10,00	40,00
02.000.55	4 tubolare 1 rca 2 lca	4	10,00	40,00
02.000.56	4 tubolare 1 rca 2 lca	4	10,00	40,00
02.000.57	4 tubolare 1 rca 2 lca	4	10,00	40,00
02.000.58	4 tubolare 1 rca 2 lca	4	10,00	40,00
02.000.59	4 tubolare 1 rca 2 lca	4	10,00	40,00
02.000.60	4 tubolare 1 rca 2 lca	4	10,00	40,00
02.000.61	4 tubolare 1 rca 2 lca	4	10,00	40,00
02.000.62	4 tubolare 1 rca 2 lca	4	10,00	40,00
02.000.63	4 tubolare 1 rca 2 lca	4	10,00	40,00
02.000.64	4 tubolare 1 rca 2 lca	4	10,00	40,00
02.000.65	4 tubolare 1 rca 2 lca	4	10,00	40,00
02.000.66	4 tubolare 1 rca 2 lca	4	10,00	40,00
02.000.67	4 tubolare 1 rca 2 lca	4	10,00	40,00
02.000.68	4 tubolare 1 rca 2 lca	4	10,00	40,00
02.000.69	4 tubolare 1 rca 2 lca	4	10,00	40,00
02.000.70	4 tubolare 1 rca 2 lca	4	10,00	40,00
02.000.71	4 tubolare 1 rca 2 lca	4	10,00	40,00
02.000.72	4 tubolare 1 rca 2 lca	4	10,00	40,00
02.000.73	4 tubolare 1 rca 2 lca	4	10,00	40,00
02.000.74	4 tubolare 1 rca 2 lca	4	10,00	40,00
02.000.75	4 tubolare 1 rca 2 lca	4	10,00	40,00
02.000.76	4 tubolare 1 rca 2 lca	4	10,00	40,00
02.000.77	4 tubolare 1 rca 2 lca	4	10,00	40,00
02.000.78	4 tubolare 1 rca 2 lca	4	10,00	40,00
02.000.79	4 tubolare 1 rca 2 lca	4	10,00	40,00
02.000.80	4 tubolare 1 rca 2 lca	4	10,00	40,00
02.000.81	4 tubolare 1 rca 2 lca	4	10,00	40,00
02.000.82	4 tubolare 1 rca 2 lca	4	10,00	40,00
02.000.83	4 tubolare 1 rca 2 lca	4	10,00	40,00
02.000.84	4 tubolare 1 rca 2 lca	4	10,00	40,00
02.000.85	4 tubolare 1 rca 2 lca	4	10,00	40,00
02.000.86	4 tubolare 1 rca 2 lca	4	10,00	40,00
02.000.87	4 tubolare 1 rca 2 lca	4	10,00	40,00
02.000.88	4 tubolare 1 rca 2 lca	4	10,00	40,00
02.000.89	4 tubolare 1 rca 2 lca	4	10,00	40,00
02.000.90	4 tubolare 1 rca 2 lca	4	10,00	40,00
02.000.91	4 tubolare 1 rca 2 lca	4	10,00	40,00
02.000.92	4 tubolare 1 rca 2 lca	4	10,00	40,00
02.000.93	4 tubolare 1 rca 2 lca	4	10,00	40,00
02.000.94	4 tubolare 1 rca 2 lca	4	10,00	40,00
02.000.95	4 tubolare 1 rca 2 lca	4	10,00	40,00
02.000.96	4 tubolare 1 rca 2 lca	4	10,00	40,00
02.000.97	4 tubolare 1 rca 2 lca	4	10,00	40,00
02.000.98	4 tubolare 1 rca 2 lca	4	10,00	40,00
02.000.99	4 tubolare 1 rca 2 lca	4	10,00	40,00
02.000.100	4 tubolare 1 rca 2 lca	4	10,00	40,00

Estimate

Print estimate

Room drawings

Print room drawings

Full description

N° of rows: N° of columns:

Email **Print** **Close**

Email - Forwarding of current estimate

To: info@italmodular.it

Re: Forwarding of estimate file

Message: Estimate file attached.

Attachment

PDF file

Cel file

OK **Cancel**

You can choose the type of attachment you want to send. The "PDF" file is an exact copy of the printed estimate and cannot be edited by the recipient. The "Cel" file can instead be imported and used, editing the data.

NB: The "Cel" file sent does not contain the customer's data and the discounts entered in the estimate.

The email is sent using the default mail client (e.g. Outlook Express).

Estimate data

This window is called up from the print preview window.

The screenshot shows a software window titled "Estimate data" with a blue header bar. The window is divided into several sections:

- Customer:** Includes fields for Name (with a dropdown arrow and two user icons), Address, ZIP/Postcode, City, Province, Country, Telephone, Notes (a large text area with scrollbars), Fax, and E-mail.
- Estimate:** Includes Date (with a calendar icon), Estimate n° (with a print icon), By, Customer reference, Drawing n°, Notes (two text lines), and Discount (two percentage input fields separated by a plus sign).
- Company:** Includes a Logo (the Italm modular logo), Heading 1 (a list of company details: ITALMODULAR S.r.l., SISTEMI MODULARI, PER L'INDUSTRIA ALIMENTARE, E L'ARREDAMENTO), Heading 2 (a list of contact and legal details: I - 26025 Pandino (CR), Via De Gasperi, 25, Tel. +39 0373 970296 / 970184, Fax +39 0373 970329, www.italmodular.it, e-mail: info@italmodular.it, R.E.A. Cremona N. 96277, Registro Imprese CR 035-2222, Codice Fiscale e Partita I.V.A. IT: 00291950194), and Currency (a dropdown menu showing "€").

At the bottom of the window, there are two buttons: "Cancel" with a red 'X' icon and "OK" with a green checkmark icon.

This window contains all the data relating to the estimate. Data are divided into three areas: customer data, estimate data and company data.

Estimate data

Customer

Name

Address

ZIP/Postcode City

Province Country

Telephone Notes

Fax

E-mail

Estimate

Date Estimate n°

By


Customer reference

Drawing n°

Notes

Discount % + %

Company

Logo 

Heading 1

ITALMODULAR S.r.l.
SISTEMI MODULARI
PER L'INDUSTRIA ALIMENTARE
E L'ARREDAMENTO

Heading 2

I - 26025 Pandino (CR)
Via De Gasperi, 25
Tel. +39 0373 970296 / 970184
Fax +39 0373 970329
www.italmodular.it
e-mail: info@italmodular.it
R.E.A. Cremona N. 96277
Registro Imprese CR 035-2222
Codice Fiscale e Partita I.V.A. IT: 00291950194

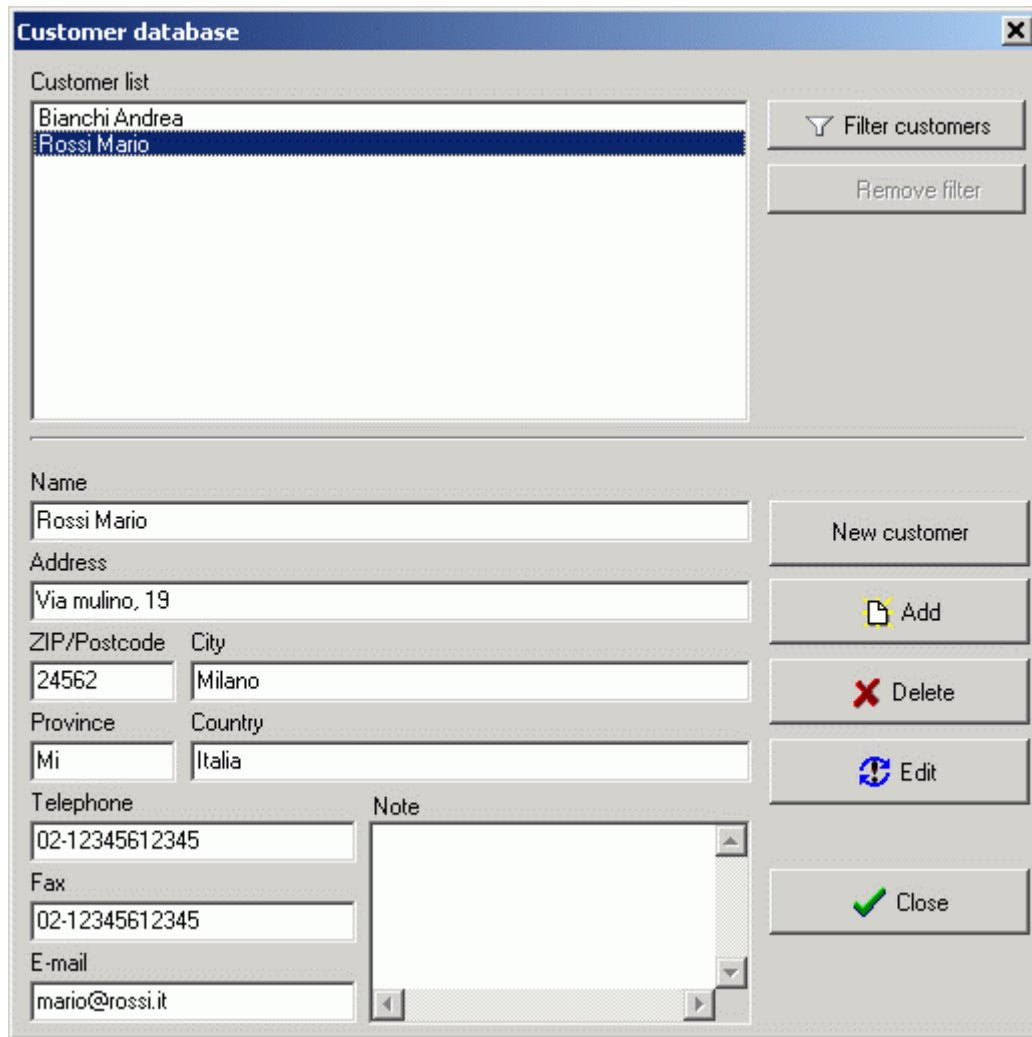
Currency

You can either select a customer from the list or fill in the relevant fields manually and click the "Add customer to database" button. The customer will be added to the customer database. You can call up the customer database directly by clicking the relevant button.

The heading 1 and heading 2 data appear on the top of the printout. You can also change the company logo by simply clicking it and choosing your own company logo.

Customer database

The customer database manages customer details and allows you to enter customer data quickly in the estimate.



All customers already entered appear on the list. If you select a customer from the list, his details will fill the fields underneath.

You can filter the listed customers by entering a search string. The program will only display those customers that have data matching the search string. To go back to viewing all customers, simply remove the filter.

You can add, delete or edit a customer using the buttons to the right of the data. The "New customer" key clears all the fields.

Estimate database



The buttons relating to the management of estimate files can be used to:

- create a new estimate
- open an existing estimate

- save the current estimate
- save the current estimate as a new estimate file

When creating a new estimate, the last two functions are the same. Clicking the "Open estimate" button calls up the estimate database management window.

File	Date	Customer	Customer reference	Estimate n°	Drawing n°
00003	28/06/2005	Rossi Mario	Sig. Marco	1260	D.1455
00002	28/06/2005	Bianchi Andrea	Supermercato	1235	D.1432
00001	13/03/2005	Rossi Mario	Rif. 1234	1234	D.1234

You can open an estimate either by double-clicking the list or by selecting the desired estimate and clicking the "OK" button.

You will only have to use the "update list" button when files in the installation's "user" folder and the list displayed are misaligned (for instance, when files are copied manually, some data are edited or the program is installed again).

You can filter the listed estimates by entering a search string. The program will only display those estimates that have data matching the search string. To go back to viewing all estimates, simply remove the filter.

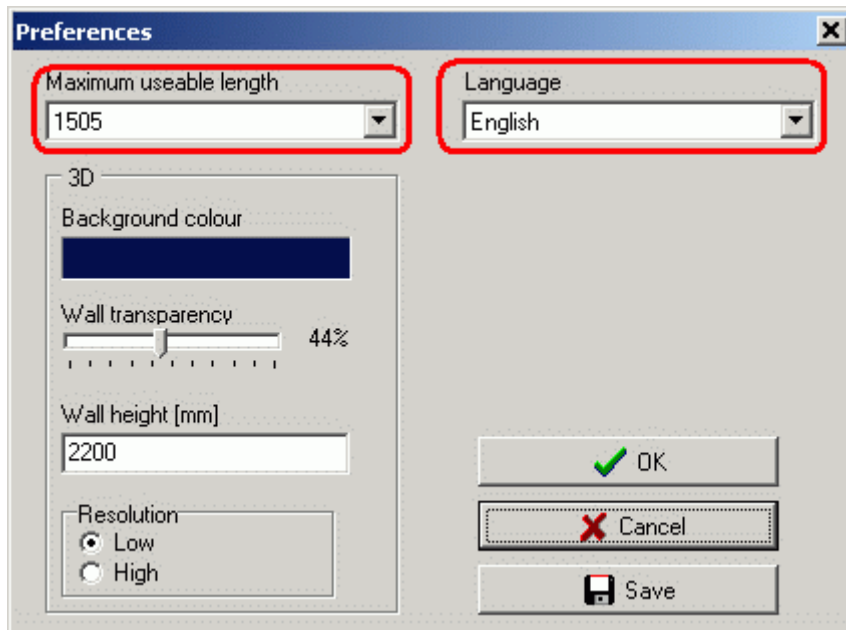
The program also allows you to delete an estimate or create a copy of it.

Preferences

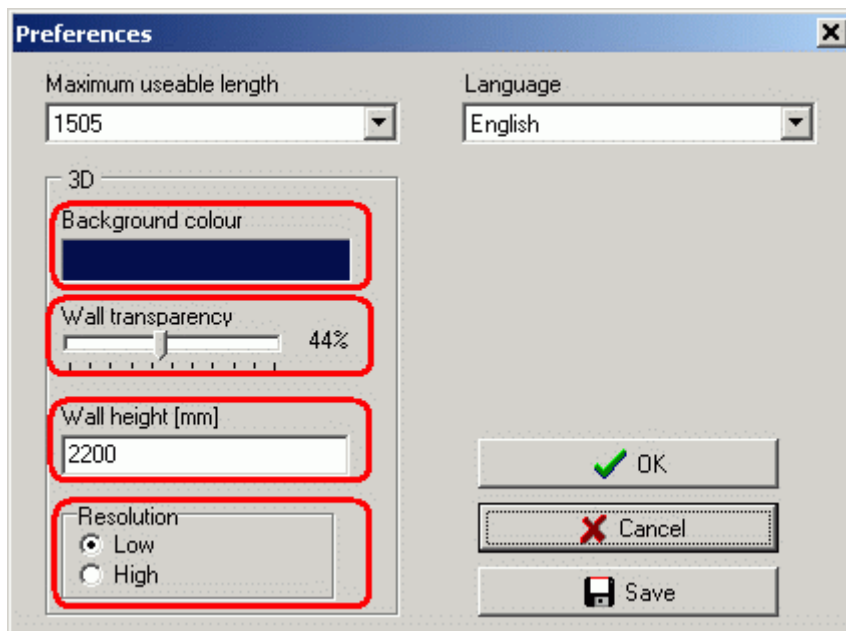
Via this window, you can set a number of program parameters.

With the "Maximum useable length" option, you select whichever of the listed maximum lengths of shelving units can be used for calculating how the walls will be fitted out.

The "Language" option, on the other hand, allows you to select the language used by the program.



Via the "Preferences" window, you can also set some of the 3D view options. Namely, you can set the background colour, the level of wall transparency, wall height and the resolution with which 3D objects are drawn.



Prices and Codes

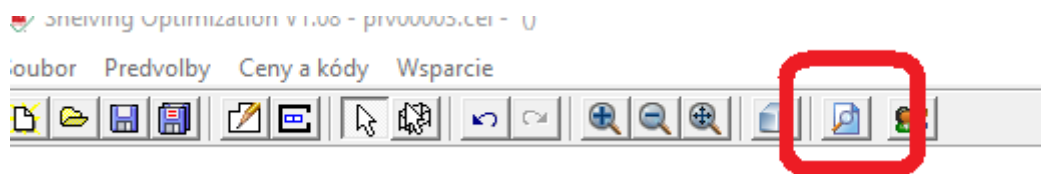
The prices and codes window allows you to edit the standard price list.

Code	Description	Alternative code	Price
92.00509	Aluminium End Side 373 x 1400	92.00509	55,85
92.00085	Aluminium End Side 373 x 1550	92.00085	55,85
92.00080	Aluminium End Side 373 x 1700	92.00080	55,85
92.00090	Aluminium End Side 373 x 2000	92.00090	61,17
92.00521	Aluminium End Side 373 x 2150	92.00521	125
92.00535	Aluminium End Side 373 x 2300	92.00535	126
92.00570	Aluminium End Side 373 x 2450	92.00570	127,5
92.00509A	Aluminium End Side 475 x 1400	92.00509A	61,17
92.00086	Aluminium End Side 475 x 1550	92.00086	61,17
92.00515	Aluminium End Side 475 x 1640	92.00515	61,17
92.00081	Aluminium End Side 475 x 1700	92.00081	61,17
92.00091	Aluminium End Side 475 x 2000	92.00091	67,03
92.00525	Aluminium End Side 475 x 2150	92.00525	125
92.00541	Aluminium End Side 475 x 2300	92.00541	126
92.00575	Aluminium End Side 475 x 2450	92.00575	127,5
92.00511	Aluminium End Side 577 x 1400	92.00511	63,3
92.00087	Aluminium End Side 577 x 1550	92.00087	63,3

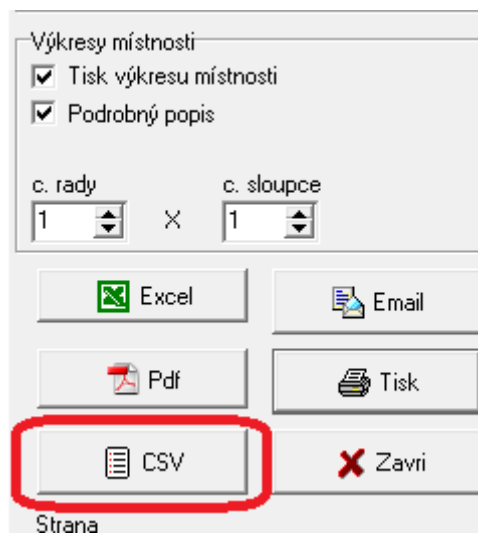
You can create your own price list by editing the prices of each item. For each item, you can also determine an alternative code, which will be used instead of the default code when compiling estimates. You cannot edit item descriptions.

Export configuration to CSV

Once you have configured what you want, you select the magnifying glass button:



The Price calculation opens, which you export to a file in CSV format and save to the desired storage with the save button.

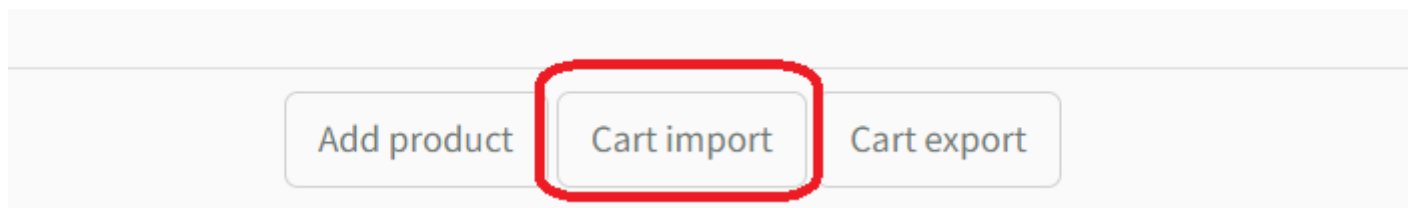


Import to B2B cart

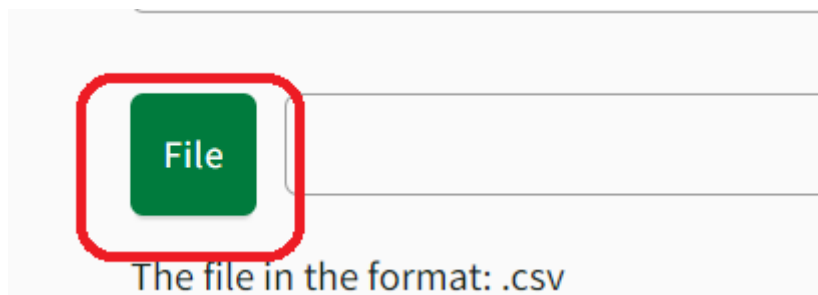


Open the shopping cart

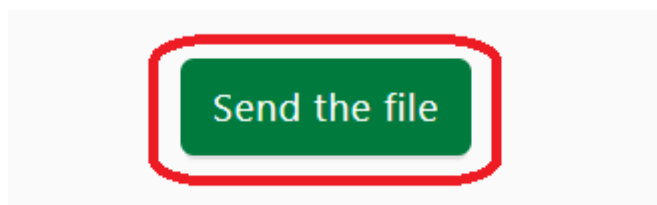
Choose „Cart import“



Select the "File" button and select the file you want to upload to the cart.



Click on „Send the file“



At this moment, you have in your basket all the products that you have prepared in the configurator